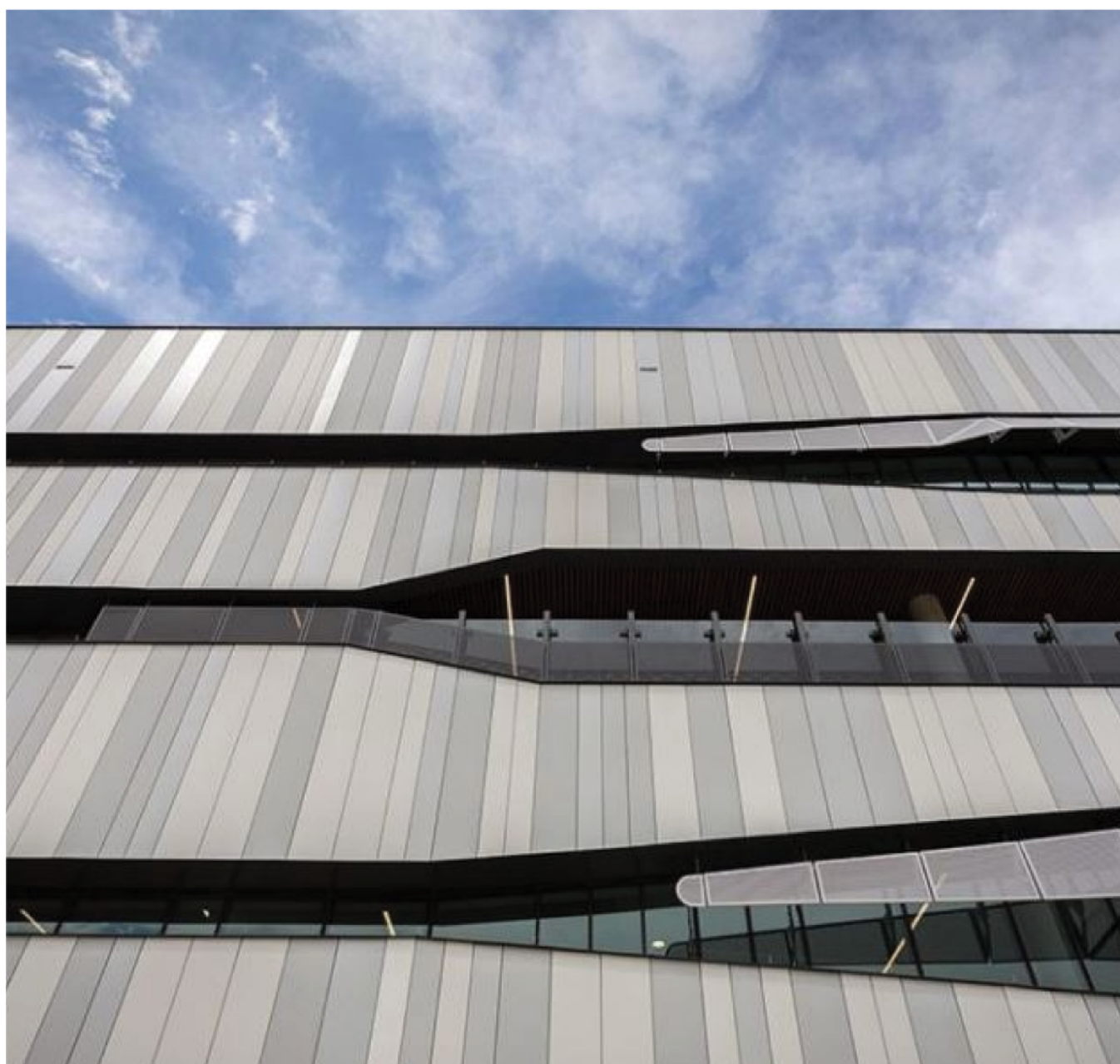


# INTERLOCKING PANEL

SPECIFICATION OF DETAILS



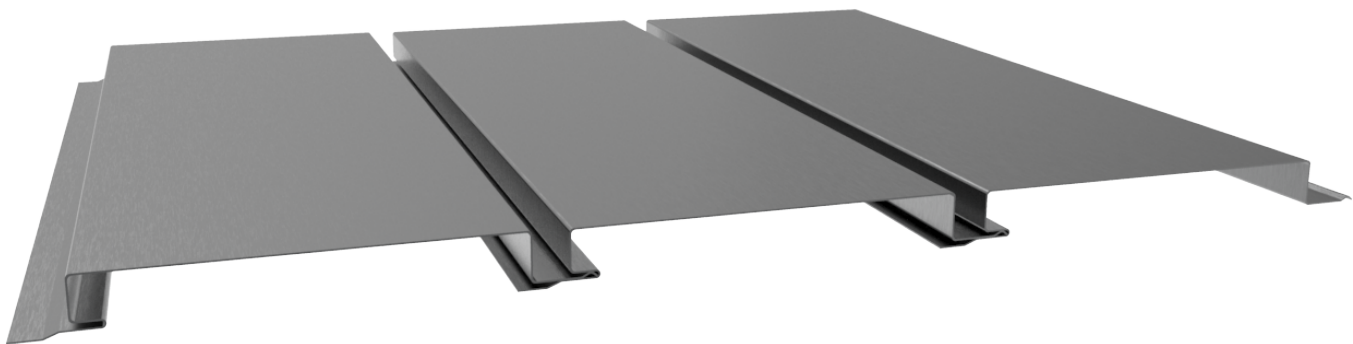
# INTERLOCKING PANEL



## TECHNICAL INFORMATION

CLADDING SYSTEM	Interlocking Panel
CLADDING MATERIAL	Aluminum 0.7/0.8mm Copper 0.6/0.8mm Coated Steel 0.55mm Zinc 1mm
DIRECT SUPPORT	1.15mm bmt metal top hat (recommended).
UNDERLAY	Breathable waterproofing membrane
WALL STRUCTURE	Top hats at 600mm/900mm spacings
PANEL DEPTH	24mm
PANEL WIDTH	Standard width is 230mm and 330mm. Custom widths available from 230-330mm but pricing isn't as economical as standard widths. Custom widths available from 330-600mm but pricing isn't as economical as standard widths and these width sizes are more susceptible to oil canning.
PANEL LENGTH	Project specific with variable lengths. Please consult us at design stage.
JOINT WIDTH	5mm, 10mm, 15mm and 20mm. In some instances 20mm joint width may require exposed fixings.

\* PLEASE NOTE: MAIN STRUCTURE AND INSULATION BY OTHERS

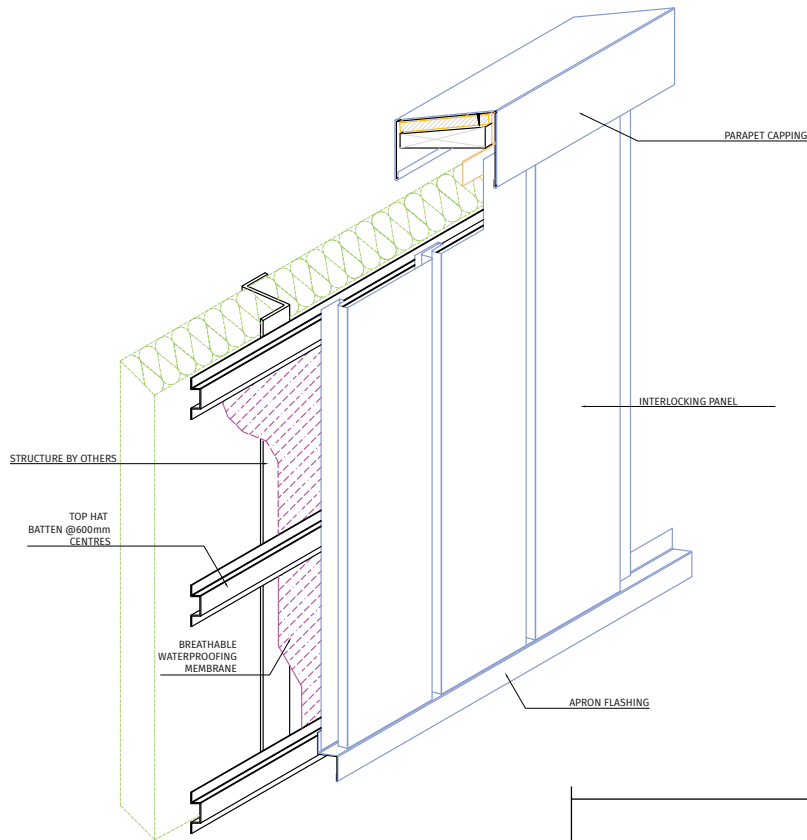


*Not to scale*

# INTERLOCKING PANEL

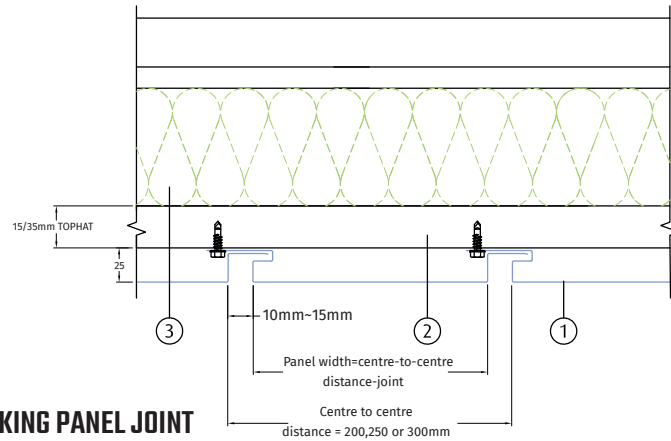


## PANEL CONNECTION & CLIPS

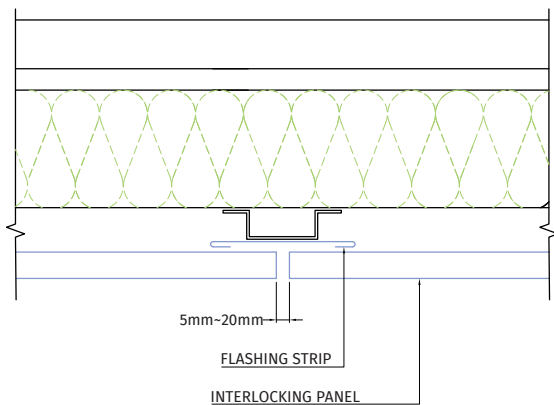


### LEGEND

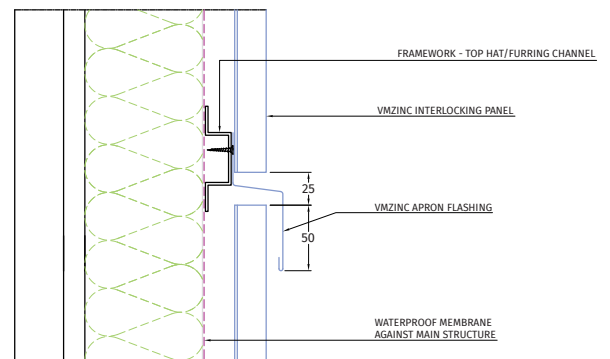
- 1. Interlocking Panel
- 2. Galvanised steel top hat
- 3. Main structure by others



**INTERLOCKING PANEL JOINT**

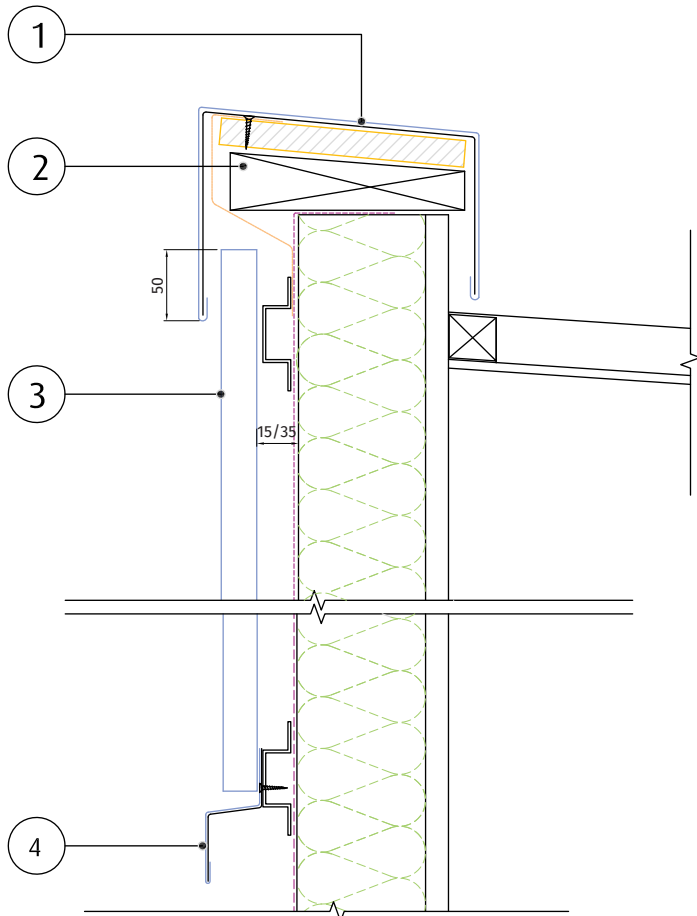


**TRANSVERSAL JUNCTION FOR HORIZONTAL PANELS**



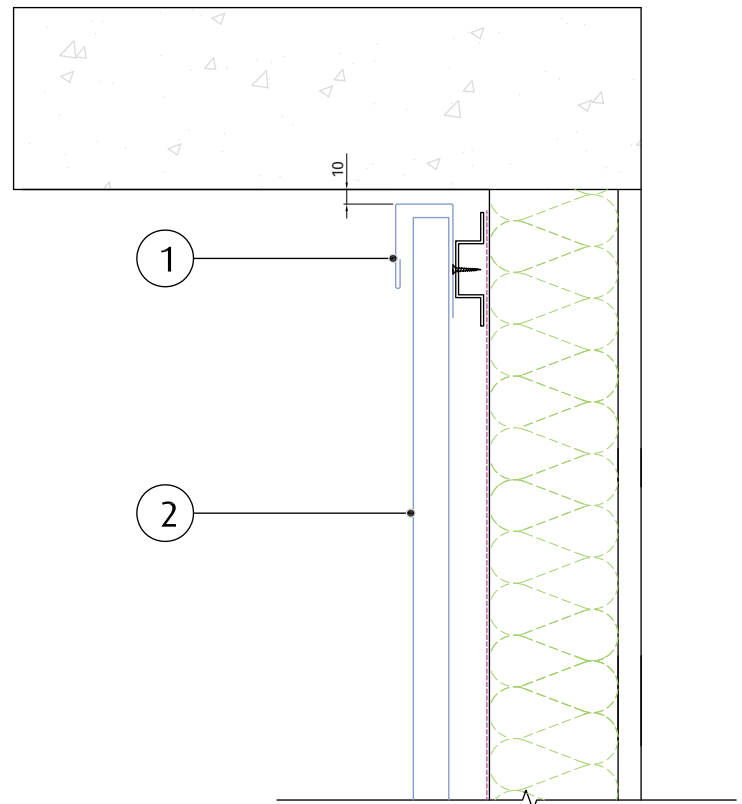
**TRANSVERSAL JUNCTION FOR VERTICAL PANELS**

# INTERLOCKING PANEL



Parapet & Bottom of wall

1. Parapet capping
2. Timber blocking
3. Interlocking Panel
4. Apron flashing

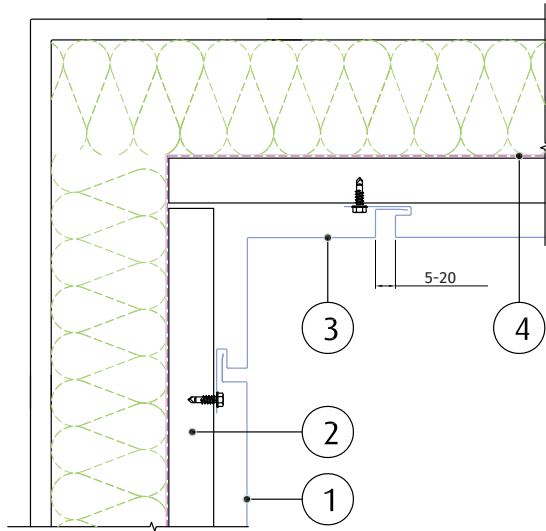


Top of Wall @ Soffit

1. Top flashing
2. Interlocking Panel

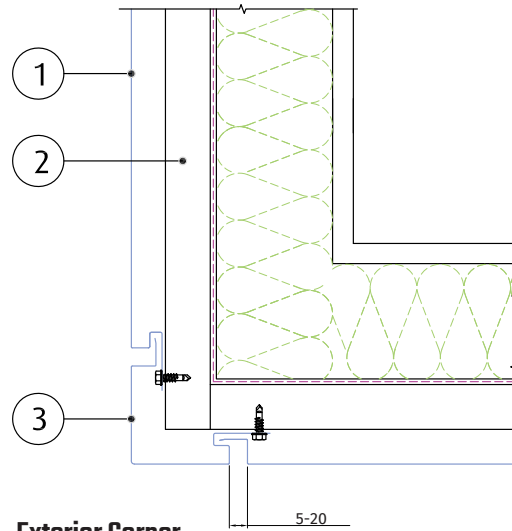
NOTE- MAIN STRUCTURE, INSULATION AND  
WATERPROOF MEMBRANE BY OTHERS

# INTERLOCKING PANEL



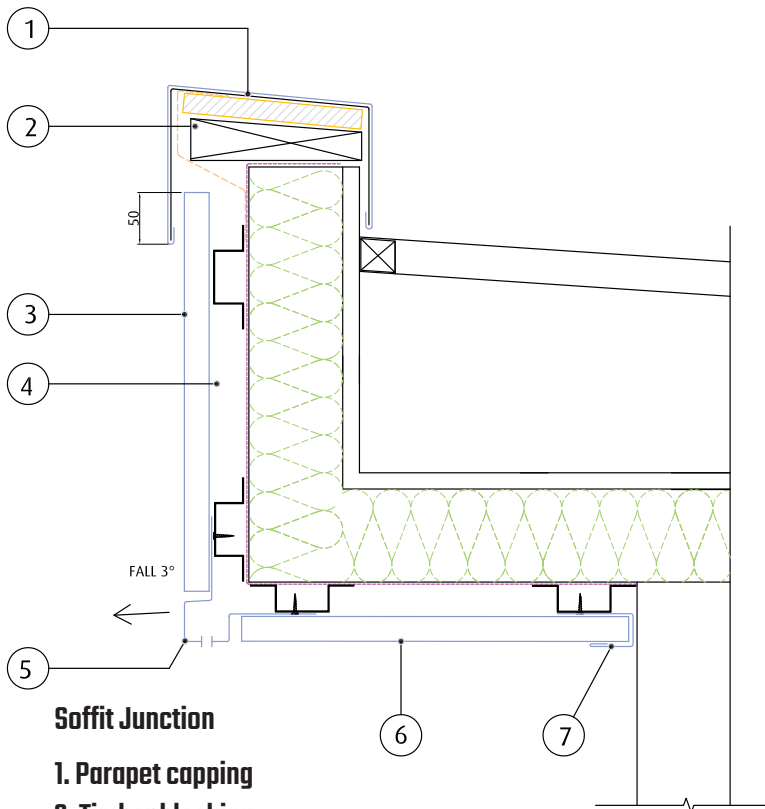
**Interior Corner**

- 1. Interlocking Panel
- 2. Interlocking Panel fixing clip
- 3. Galvanised steel top hat
- 4. Interior corner flashing



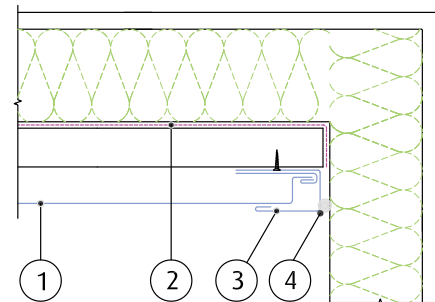
**Exterior Corner**

- 1. Interlocking Panel
- 2. Interlocking Panel fixing clip
- 3. Exterior corner flashing



**Soffit Junction**

- 1. Parapet capping
- 2. Timber blocking
- 3. Interlocking Panel
- 4. Breathable with proof membrane
- 5. Soffit corner flashing
- 6. Interlocking Panel soffit panel
- 7. C Channel

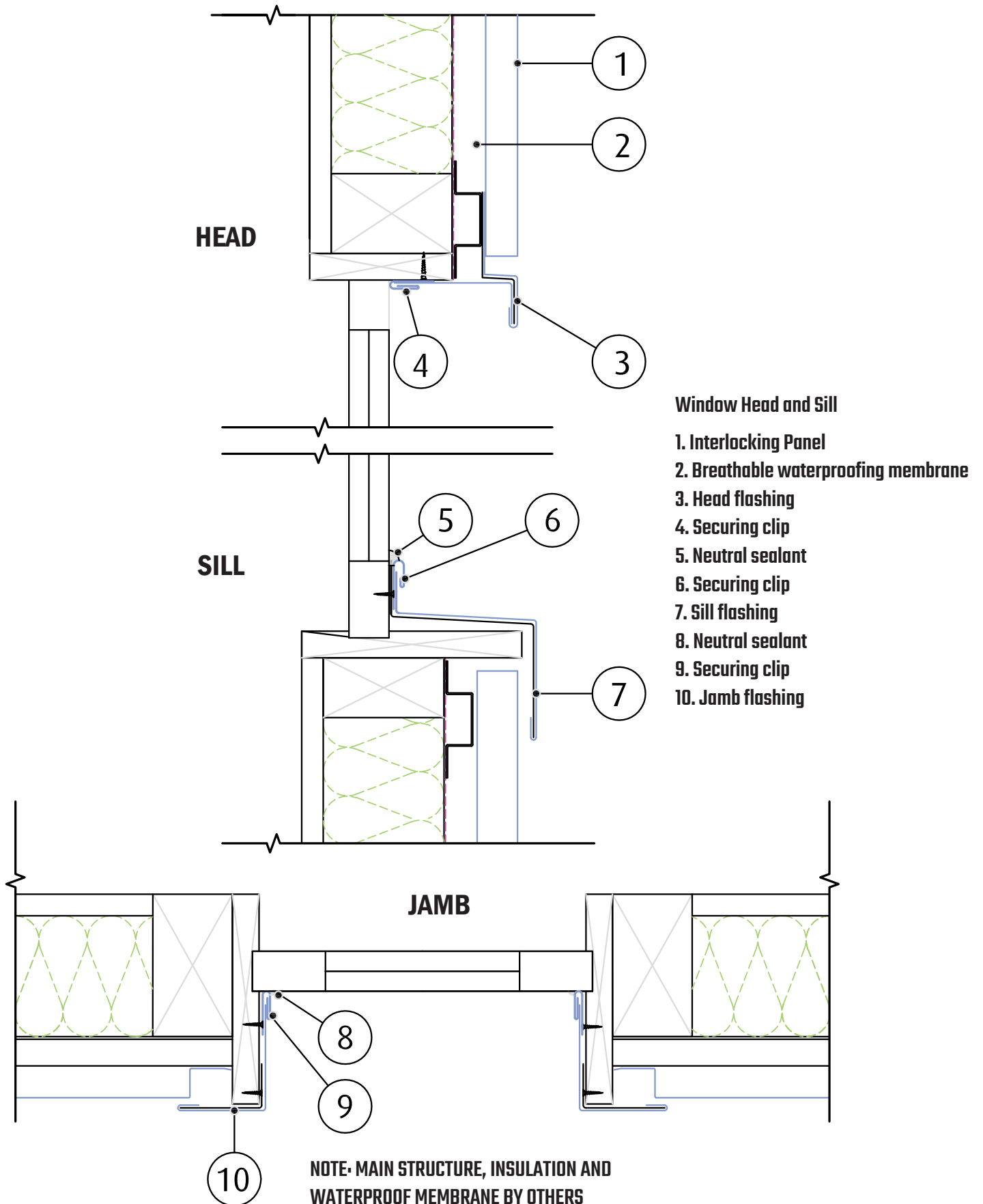


**NOTE: MAIN STRUCTURE, INSULATION AND WATERPROOF MEMBRANE BY OTHERS**

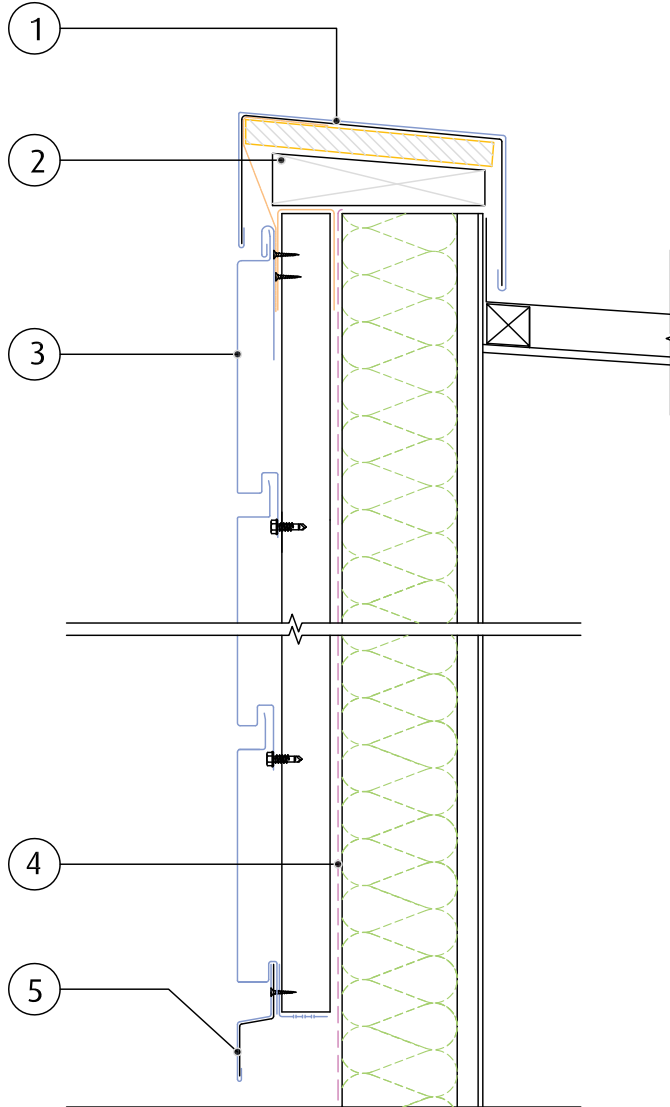
**Wall Junction**

- 1. Interlocking Panel
- 2. Breathable waterproofing membrane
- 3. C Channel
- 4. Neutral sealant

# INTERLOCKING PANEL

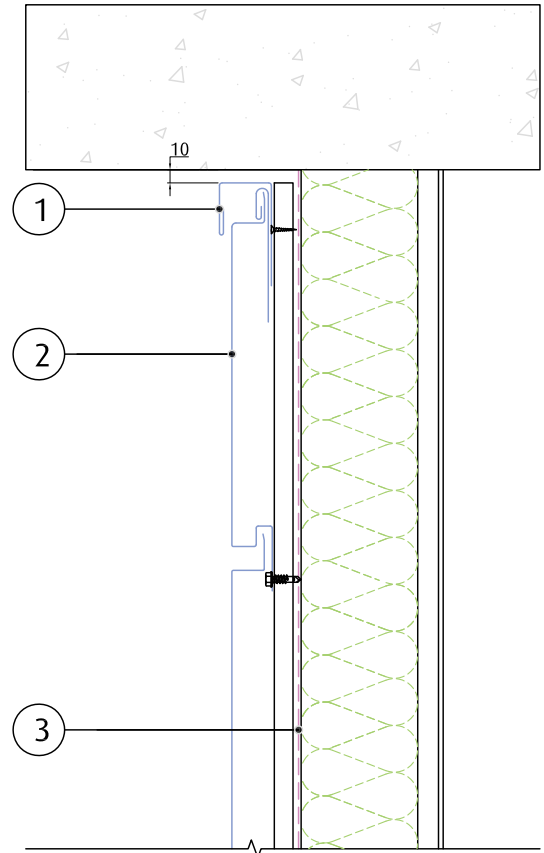


# INTERLOCKING PANEL



## Parapet & Bottom of wall

- 1. Parapet capping
- 2. Timber blocking
- 3. Interlocking Panel
- 4. Breathable waterproofing membrane
- 5. Apron flashing

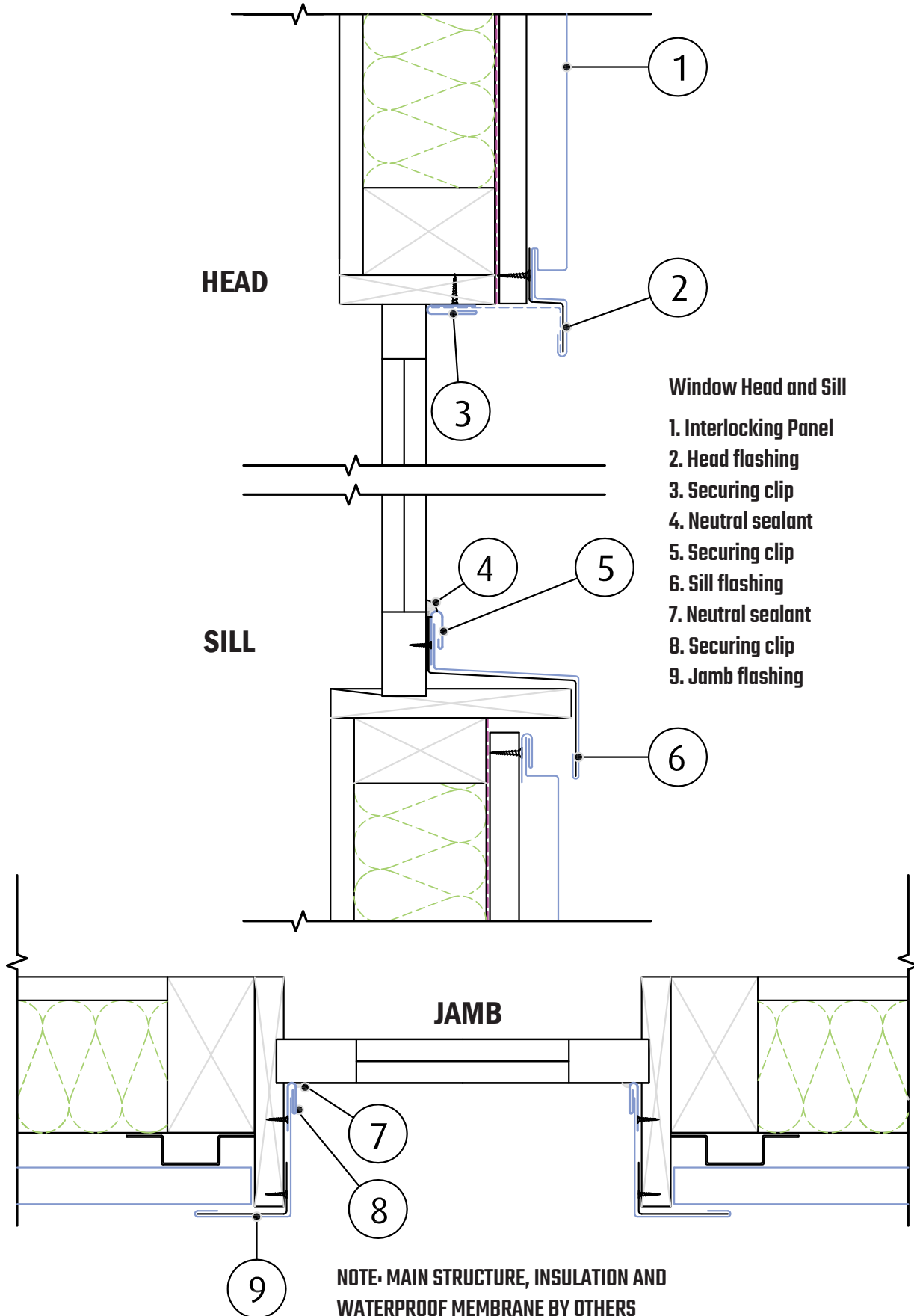


## Top of wall @ Soffit

- 1. Top flashing
- 2. Interlocking Panel
- 3. Breathable waterproofing membrane

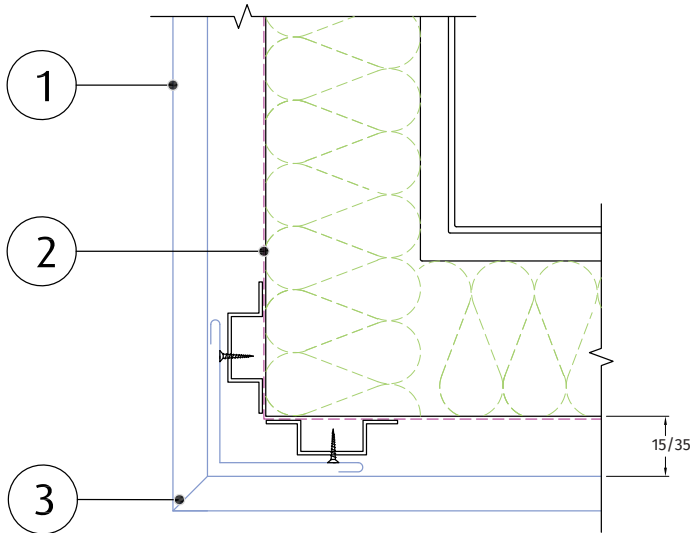
**NOTE- MAIN STRUCTURE, INSULATION AND WATERPROOF MEMBRANE BY OTHERS**

# INTERLOCKING PANEL



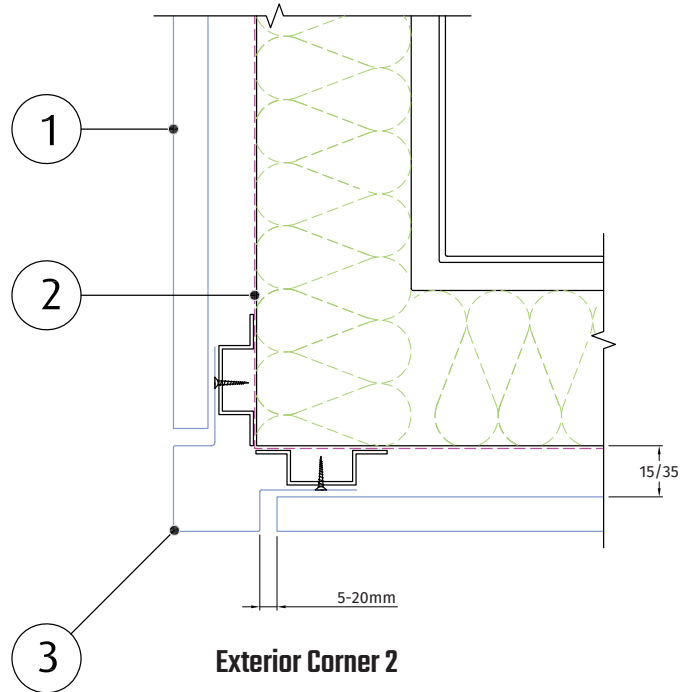


# INTERLOCKING PANEL



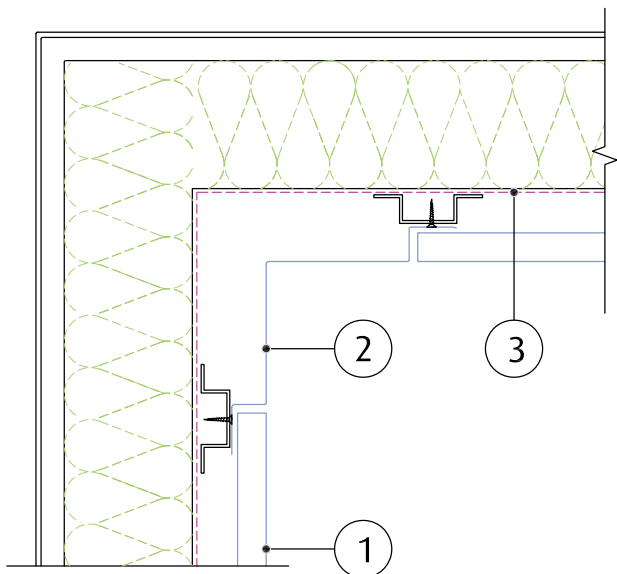
**Exterior Corner 1**

- 1. Interlocking Panel
- 2. Breathable waterproofing membrane
- 3. Mitred external corner



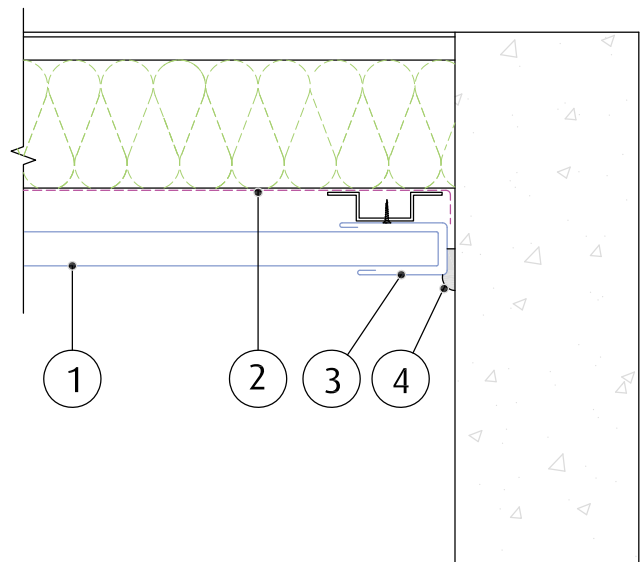
**Exterior Corner 2**

- 1. Interlocking Panel
- 2. Breathable waterproofing membrane
- 3. Exterior corner flashing



**Interior Corner**

- 1. Interlocking Panel
- 2. Exterior corner flashing
- 3. Breathable waterproofing membrane



**Wall Junction**

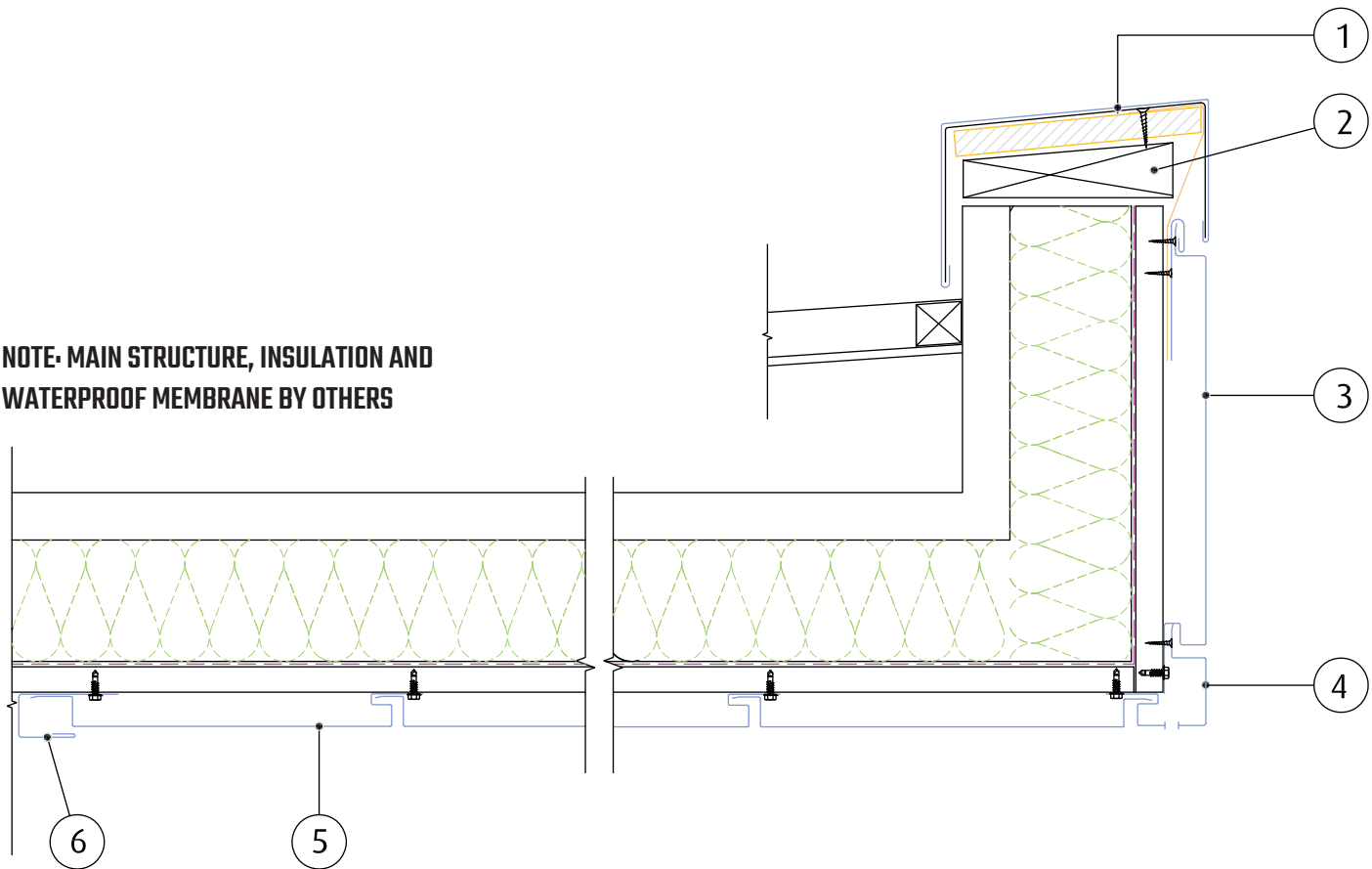
- 1. Interlocking Panel
- 2. Breathable waterproofing membrane
- 3. Securing clip
- 4. Neutral sealant

**NOTE- MAIN STRUCTURE, INSULATION AND WATERPROOF MEMBRANE BY OTHERS**

# INTERLOCKING PANEL



**NOTE- MAIN STRUCTURE, INSULATION AND WATERPROOF MEMBRANE BY OTHERS**



## **Soffit Junction**

- 1. Parapet capping**
- 2. Timber blocking**
- 3. Interlocking Panel**
- 4. Soffit corner flashing**
- 5. Interlocking Panel soffit panel**
- 6. Securing clip**